

# U200 / U100



**Zhuhai Siger Medical Equipment Co., Ltd**

Add : Building 2, No.1, Chuangxin Yi Road, Tangjiawan Town, Zhuhai

Tel : 86-756-3881087 Email : info@siger.cn Web : www.siger.cn



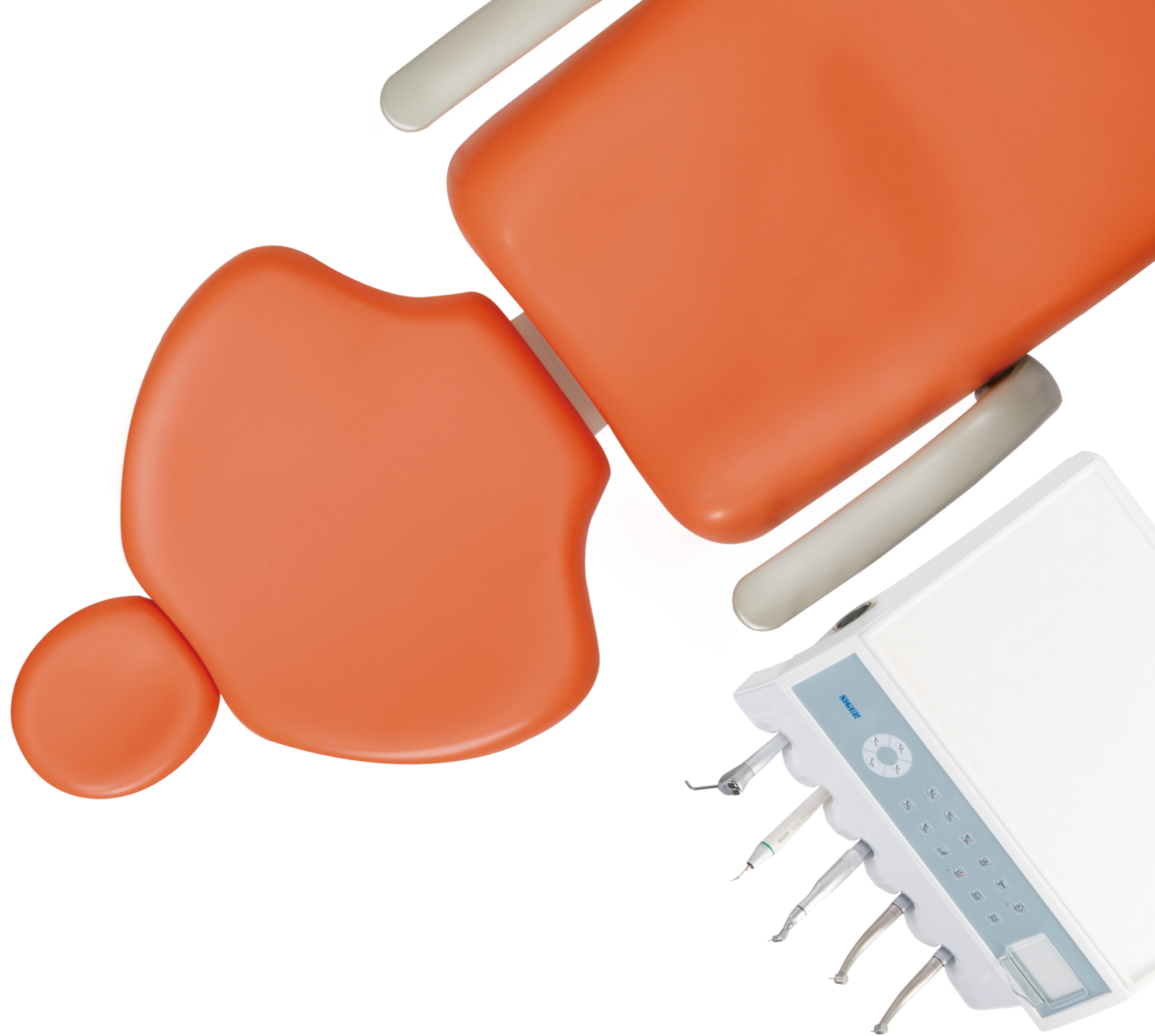
: Siger medical



: Siger Medical



: siger\_medical



**SIGER**

U200 / U100





## CNC Machining Base

Along with the establishment of CNC machining base

- The quality of metal parts with standardized production is stable.
- The metal parts are much precise.
- Working efficiency is greatly improved.

# U SERIES U200 / U100

Perfect synthesis of imagination and reality



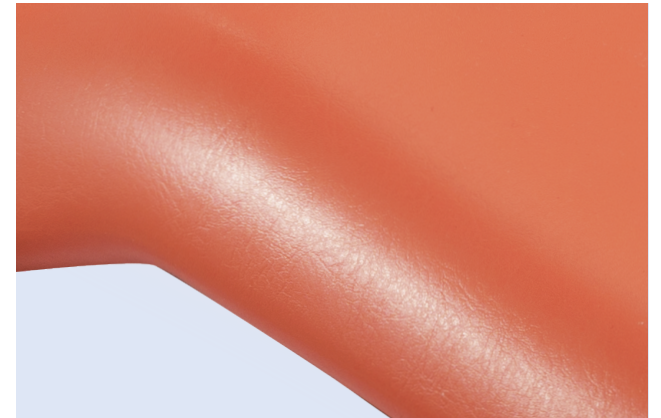
U100



U200

## Comfortable patient chair-Ergonomic design

- Unique anatomic backrest and dual-jointed headrest can fit with patients of different sizes.
- A safety device stops the patient chair moving down in the presence of obstacles and the chair will move up a little bit.
- Angle sensor ensures accurate chair position memory and no cumulative error.

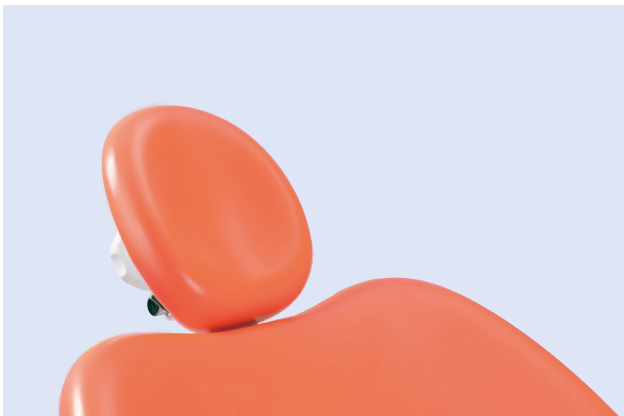




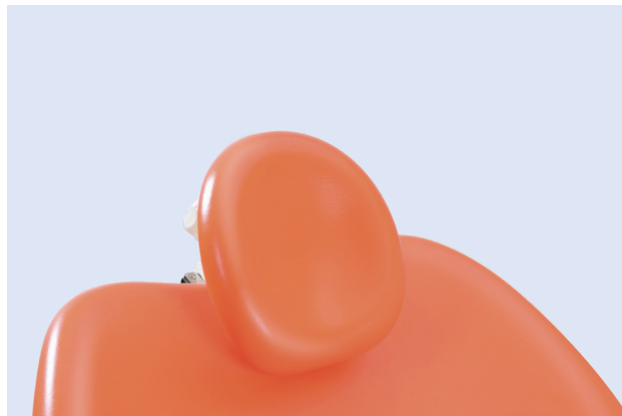
- Chair movement protection, safety cut-out stops the chair and backrest from moving down in the presence of obstacles. The chair or the backrest will move up a little bit to avoid unexpected harm
- The scientific linkage design of the patient chair backrest and seat can greatly reduce the patient's feeling of stretching and squeezing when the chair is moving.



#### Scientific headrest design can meet the needs of different patients



Adult mode



Children mode



Special Mode

# Upgradable ultra-wide patient chair-for prolong treatment

## Extremely Comfortable

- The patient chair is ergonomically designed so that patient's weight on the chair is evenly distributed. The body can remain relaxed even after prolonged treatment.
- The patient's head, shoulders, arms, waist and legs are well supported by the wide backrest and seat.
- The seat bending angle increased, the patient remains comfortable during the treatment.
- The soft starter system makes the start and stop of the patient chair movement stable.

## Convenient and Safe

- 380mm ultra low chair position which is convenient for children and the elderly people.
- The installation of upholstery is convenient and simple.

## High quality materials and production process

- High strength steel makes patient chair more firm and stable.
- The patient chair adopts full injection molding cover and seat lining board, which is hygienic and durable.







## U200 | Practical and Technological Design



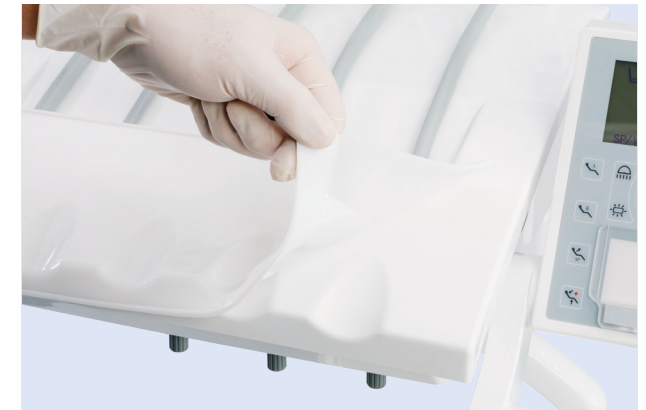
- Touch control panel and 5 preset memory positions.
- Intelligent linkage program by only one button to control cup filling, bowl rinsing, chair position and operating light on / off.
- Cup filling and bowl rinsing time can be set accordingly.
- Anti-suction system of dynamic instrument reduces iatrogenic infection.
- Instrument interlock: When one instrument is working, the others are locked safely to prevent accidental injuries and improve work efficiency.
- Interlock between instrument and chair, When instrument is taken, movement of chair is locked.
- Option of swing version and hanging version.



- Air break switch can easily adjust and lock the height of the instrument table



- Optional fast connection system for dynamic instrument provides great convenience for disassembling the pipes, cleaning and disinfection.



- Removable silicon pad of instrument table for cleaning and sterilization

## U200 Assistant Element

- 11 buttons touch control panel for assistant element can control chair position, operating light, cup filling and bowl rinsing.
- Photoelectric sensor system controlling on / off of HV suction and saliva ejector.
- After HV suction handle is put back on the hanger, HV suction system will keep working for 3 seconds to drain the contaminant inside the tubes for reducing the cross-infection.





## U100 | Convenient and economic



- Air break switch can easily adjust and lock the height of the instrument table



- Optional fast connection system for dynamic instrument provides great convenience for disassembling the pipes, cleaning and disinfection.



- Removable silicon pad of instrument table for cleaning and sterilization



## U100 Dentist Element

- 5 preset memory positions.
- control panel and 5 preset memory positions.
- Intelligent linkage program by only one button to control cup filling, bowl rinsing, chair position and operating light on/off.
- Cup filling and bowl rinsing time can be set accordingly
- Interlock between instrument and chair, When instrument is taken, movement of chair is locked.
- Option of swing version, hanging version

# U SERIES | Multifunctional foot control

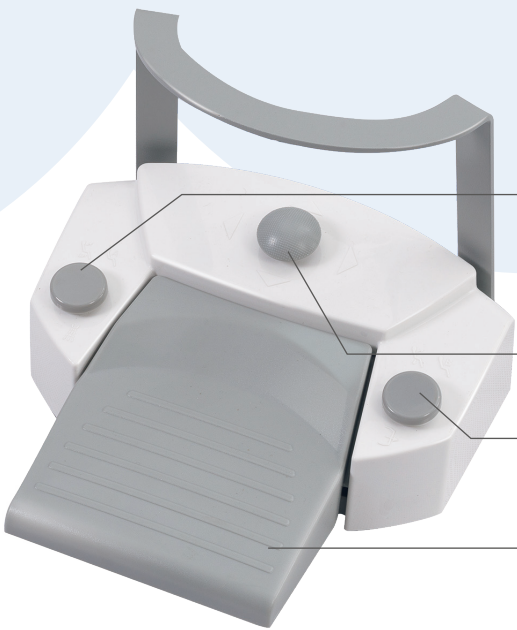
Pedal- type foot control and lever- type foot control is selectable.



U200 lever- type foot control



U100 lever- type foot control



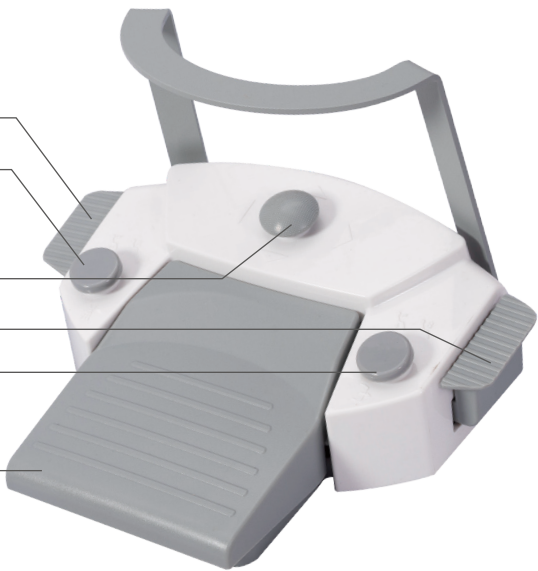
U200 Pedal- type foot control

Short press: Rinsing position  
Long press: Preset position A  
Dynamic instruments working with / without water

Chair position adjustment

Short press: Zero position  
Long press: Preset position B  
Handpiece chip blow

Dynamic instrument working control



U100 Pedal- type foot control



## U SERIES | Operating Light



**SIGER V1**



**SIGER V2**



**FARO EDI LED**



**Dental Lamp KY-P138**

Brand/Model	SIGER V1	SIGER V2	FARO EDI LED	Dental Lamp KY-P138
Technology	LED	LED	LED	LED
Color Temperature	4300K	5000K	5000K	4000-5500K
Intensity	8000-30000LUX	8000-30000LUX	8000-35000LUX	10000-90000LUX
Light Spot	70 x 140 MM ( @700 MM )	80 x 150 MM ( @700 MM )	100 x 180 MM ( @700 MM )	φ 120 MM ( @ 900 MM )
Voltage	12 -17 Vac	12 -17 Vac	12 -24 Vac	12 -24 Vac
Consumption	8 VA	6 VA	8 VA	38 VA
Standard / Optional	Standard	Standard	Optional	Optional

\*Ceiling version is optional

## U SERIES | Unique Hygienic Design



- Detachable ceramic spittoon for cleaning



- Detachable cup filler for cleaning



- Detachable suction system for cleaning



- Distilled water / Tap water easy switching system



- Tubing flushing & Disinfection system is optional

## U SERIES | Rich configuration options



- Standard bigger tray T1(36X26cm)



- Bigger tray T2(40 X 30cm) is upgradable



- Right armrest is optional



- Monitor bracket is optional.



- 3D movement headrest is optional



Assistant stool is optional

The height of the seat and the tilt of backrest can be adjusted to meet with ergonomics. Silent swivel casters are equipped.

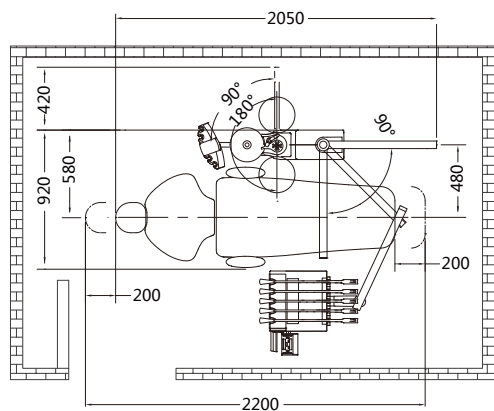
## Standard upholstery color



## Italian upholstery color



# Dimension



## Layout of floor box holes

